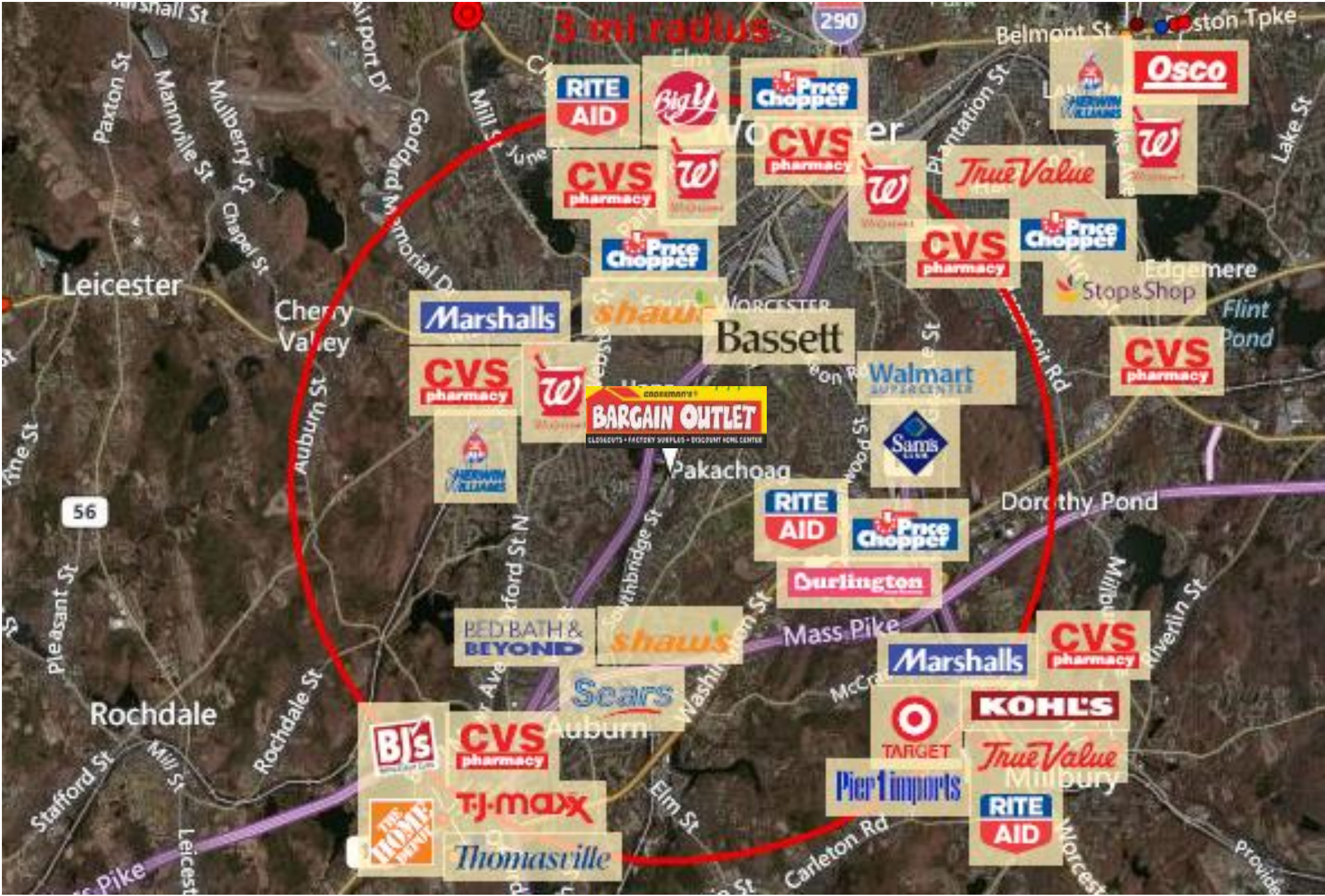
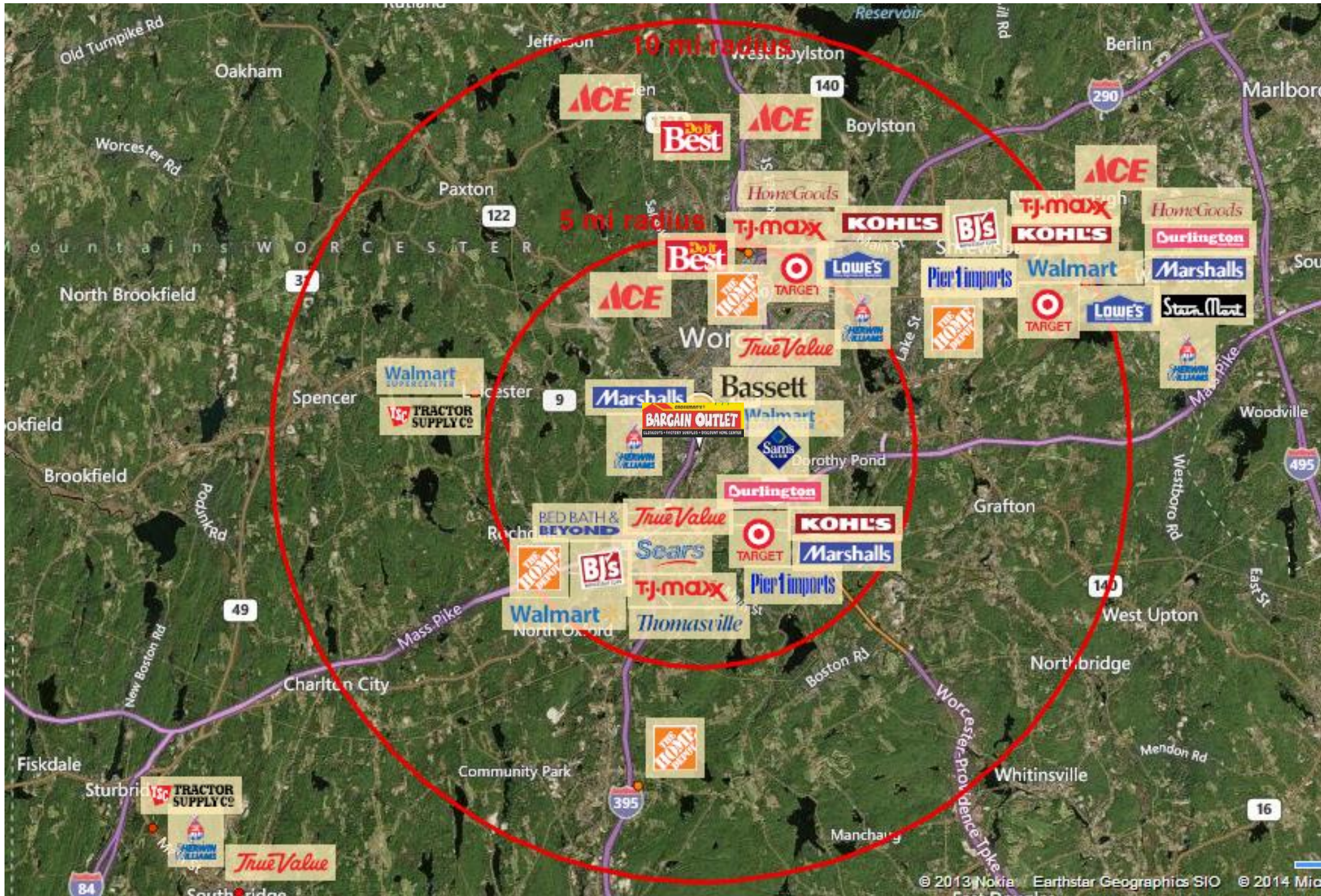


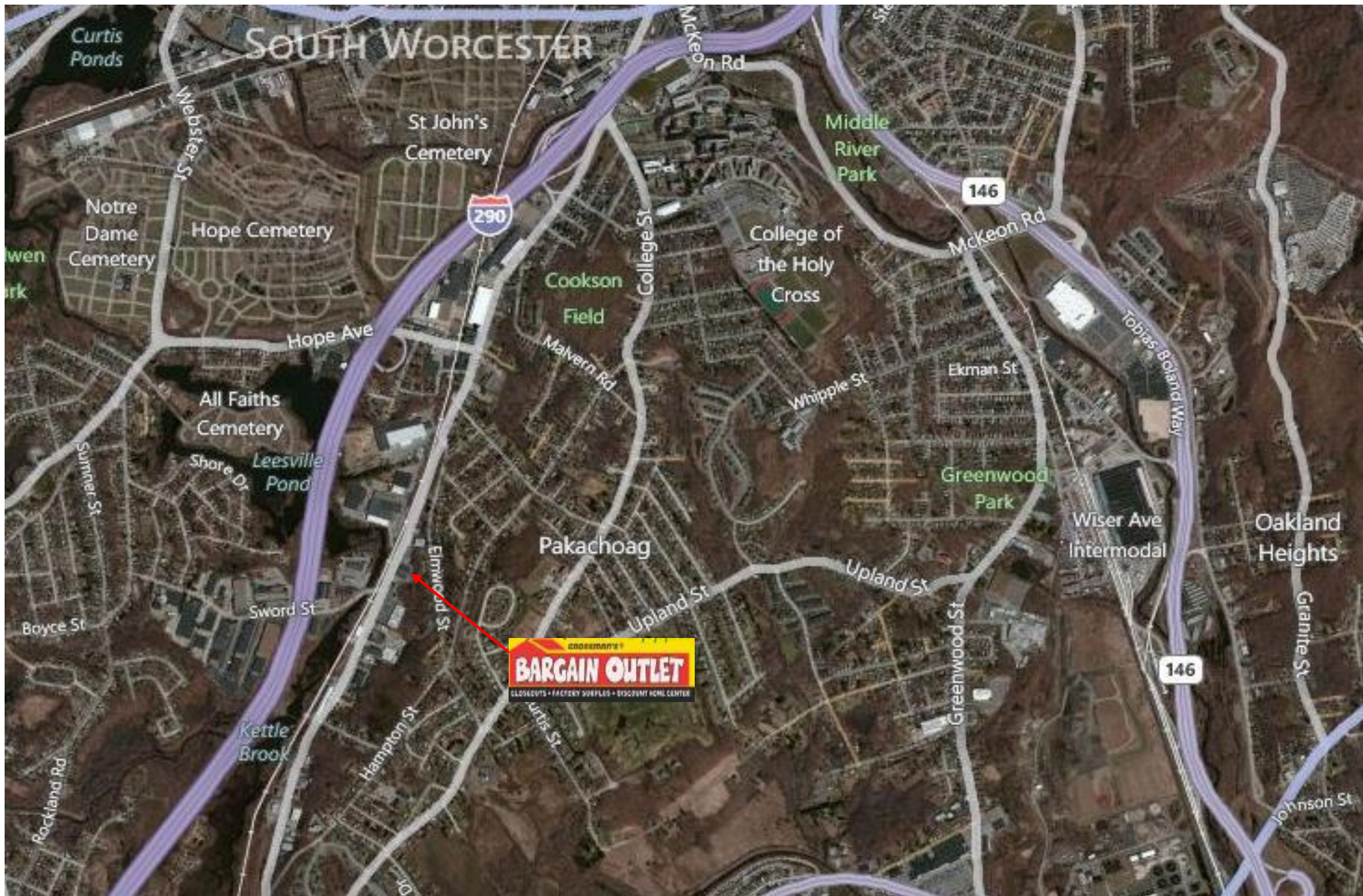
APPROX
2.8 Acres

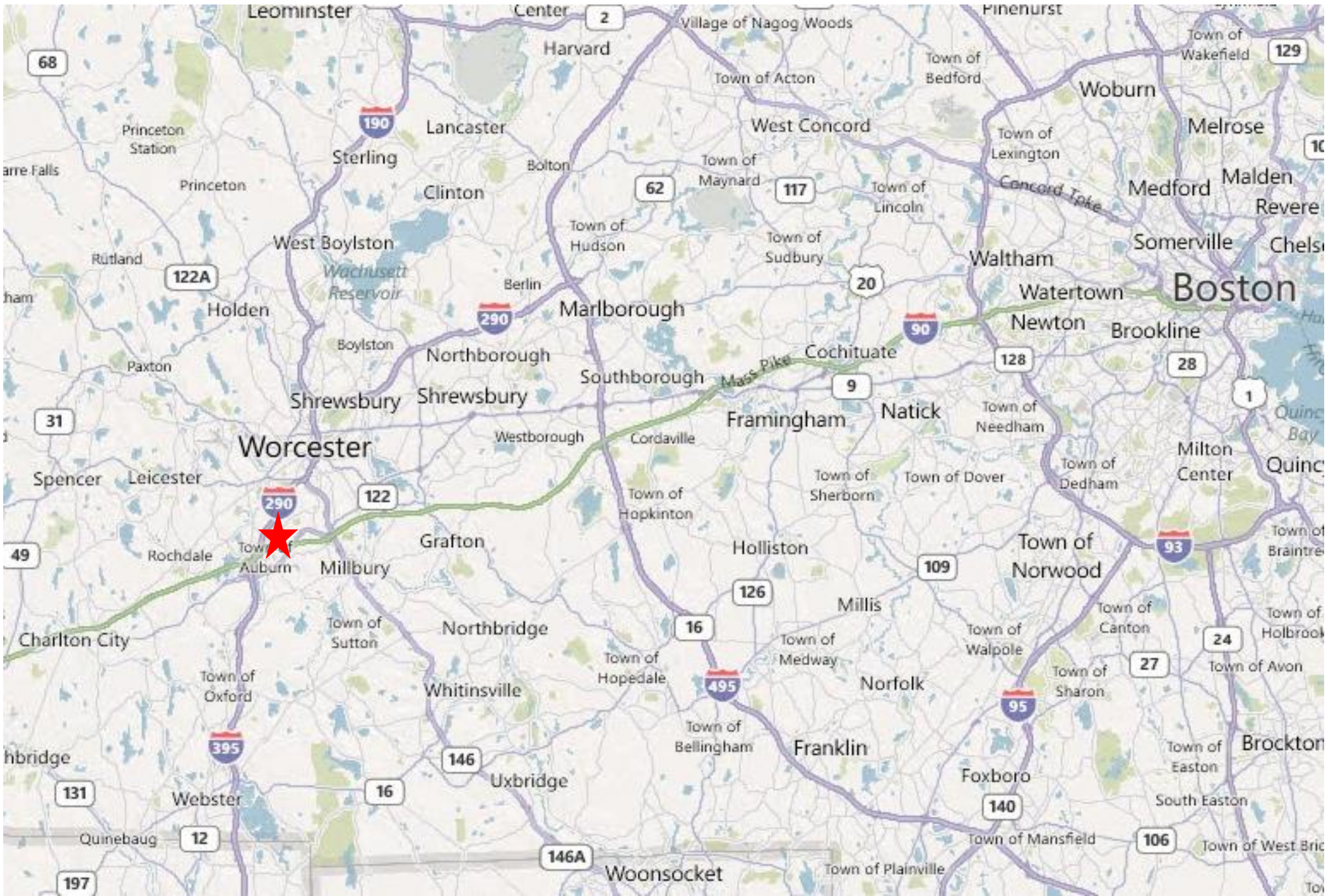






© 2013 Nokia Earthstar Geographics SIO © 2014 Microsoft





Auburn, MA 01501	3 mi radius		5 mi radius		10 mi radius	
Population						
Estimated Population (2013)	96,624		185,434		350,730	
Projected Population (2018)	99,054		190,101		359,758	
Census Population (2010)	96,066		184,356		349,355	
Census Population (2000)	92,586		177,576		328,156	
<i>Projected Annual Growth (2013 to 2018)</i>	2,430	0.5%	4,667	0.5%	9,029	0.5%
<i>Historical Annual Growth (2010 to 2013)</i>	558	0.2%	1,078	0.2%	1,375	0.1%
<i>Historical Annual Growth (2000 to 2010)</i>	3,480	0.4%	6,780	0.4%	21,199	0.6%
Households						
Estimated Households (2013)	35,926		71,424		134,970	
Projected Households (2018)	37,149		73,850		139,552	
Census Households (2010)	35,206		69,985		132,246	
Census Households (2000)	34,802		68,699		125,297	
<i>Projected Annual Growth (2013 to 2018)</i>	1,223	0.7%	2,426	0.7%	4,582	0.7%
<i>Historical Annual Growth (2010 to 2013)</i>	720	0.7%	1,439	0.7%	2,724	0.7%
<i>Historical Annual Growth (2000 to 2010)</i>	404	0.1%	1,286	0.2%	6,948	0.6%
Average Household Income						
Estimated Average Household Income (2013)	\$55,311		\$62,843		\$77,197	
Projected Average Household Income (2018)	\$59,295		\$67,274		\$82,757	
Census Average Household Income (2010)	\$53,347		\$60,624		\$74,171	
Census Average Household Income (2000)	\$42,861		\$47,882		\$57,553	
<i>Projected Annual Growth (2013 to 2018)</i>	\$3,983	1.4%	\$4,431	1.4%	\$5,560	1.4%
<i>Historical Annual Growth (2010 to 2013)</i>	\$1,965	1.2%	\$2,219	1.2%	\$3,026	1.4%
<i>Historical Annual Growth (2000 to 2010)</i>	\$10,485	2.4%	\$12,743	2.7%	\$16,617	2.9%
Median Household Income						
Estimated Median Household Income (2013)	\$46,777		\$52,929		\$66,065	
Projected Median Household Income (2018)	\$50,761		\$57,655		\$71,977	
Census Median Household Income (2010)	\$44,712		\$50,161		\$62,802	
Census Median Household Income (2000)	\$35,775		\$39,526		\$48,492	
<i>Projected Annual Growth (2013 to 2018)</i>	\$3,984	1.7%	\$4,725	1.8%	\$5,912	1.8%
<i>Historical Annual Growth (2010 to 2013)</i>	\$2,065	1.5%	\$2,768	1.8%	\$3,263	1.7%
<i>Historical Annual Growth (2000 to 2010)</i>	\$8,937	2.5%	\$10,635	2.7%	\$14,310	3.0%

