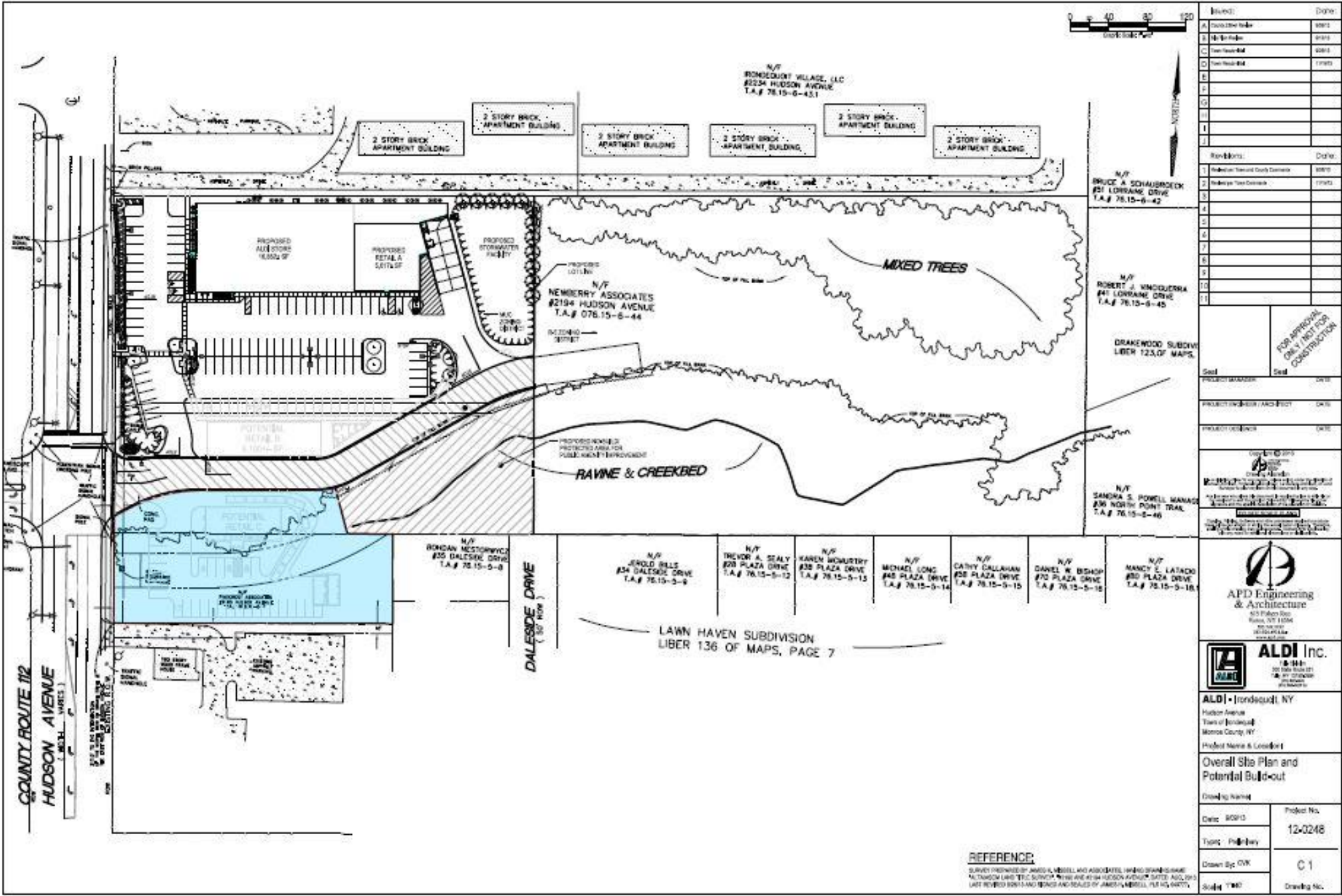








<b>Rochester, NY 14617</b>	<b>1 ml radius</b>		<b>3 ml radius</b>		<b>5 ml radius</b>	
<b>Population</b>						
Estimated Population (2013)	13,006		136,233		289,630	
Projected Population (2018)	13,098		137,185		291,656	
Census Population (2010)	12,969		135,830		288,760	
Census Population (2000)	13,128		140,377		297,051	
<i>Projected Annual Growth (2013 to 2018)</i>	93	0.1%	952	0.1%	2,026	0.1%
<i>Historical Annual Growth (2010 to 2013)</i>	37	0.1%	403	0.1%	870	0.1%
<i>Historical Annual Growth (2000 to 2010)</i>	-159	-0.1%	-4,547	-0.3%	-8,291	-0.3%
<b>Households</b>						
Estimated Households (2013)	5,553		55,259		124,151	
Projected Households (2018)	5,635		56,068		125,965	
Census Households (2010)	5,533		55,067		123,717	
Census Households (2000)	5,557		55,975		124,156	
<i>Projected Annual Growth (2013 to 2018)</i>	82	0.3%	809	0.3%	1,814	0.3%
<i>Historical Annual Growth (2010 to 2013)</i>	20	0.1%	192	0.1%	434	0.1%
<i>Historical Annual Growth (2000 to 2010)</i>	-24	-	-908	-0.2%	-439	-
<b>Average Household Income</b>						
Estimated Average Household Income (2013)	\$66,119		\$48,123		\$50,024	
Projected Average Household Income (2018)	\$67,666		\$49,258		\$51,206	
Census Average Household Income (2010)	\$62,901		\$45,857		\$47,717	
Census Average Household Income (2000)	\$56,452		\$42,617		\$43,163	
<i>Projected Annual Growth (2013 to 2018)</i>	\$1,547	0.5%	\$1,135	0.5%	\$1,182	0.5%
<i>Historical Annual Growth (2010 to 2013)</i>	\$3,219	1.7%	\$2,266	1.6%	\$2,307	1.6%
<i>Historical Annual Growth (2000 to 2010)</i>	\$6,449	1.1%	\$3,239	0.8%	\$4,554	1.1%
<b>Median Household Income</b>						
Estimated Median Household Income (2013)	\$56,494		\$40,472		\$40,563	
Projected Median Household Income (2018)	\$59,914		\$43,129		\$43,158	
Census Median Household Income (2010)	\$53,558		\$38,902		\$39,016	
Census Median Household Income (2000)	\$47,247		\$34,098		\$34,561	
<i>Projected Annual Growth (2013 to 2018)</i>	\$3,420	1.2%	\$2,657	1.3%	\$2,595	1.3%
<i>Historical Annual Growth (2010 to 2013)</i>	\$2,936	1.8%	\$1,569	1.3%	\$1,548	1.3%
<i>Historical Annual Growth (2000 to 2010)</i>	\$6,311	1.3%	\$4,805	1.4%	\$4,455	1.3%



Block:	Date:
A	02/01/2014
B	02/01/2014
C	02/01/2014
D	02/01/2014
E	
F	
G	
H	
I	
J	

Revisions:	Date:
1	02/01/2014
2	02/01/2014
3	
4	
5	
6	
7	
8	
9	
10	
11	

Project Name:	Date:
1	02/01/2014
2	02/01/2014
3	
4	
5	
6	
7	
8	
9	
10	
11	

**APD Engineering & Architecture**  
 613 Palen Road  
 Irondequoit, NY 14054  
 516.833.4444  
 www.apdeng.com

**ALDI Inc.**  
 10000 Route 191  
 Tonawanda, NY 14154  
 716.833.4444

**ALDI - Irondequoit, NY**  
 Hudson Avenue  
 Town of Irondequoit  
 Monroe County, NY  
 Project Name & Location

**Overall Site Plan and Potential Build-out**

Drawing Name	
Date: 8/20/14	Project No. 12-0248
Type: Preliminary	
Drawn By: CJK	Scale: C 1
Scale: 1"=40'	Drawing No.

**REFERENCE:**  
 SURVEY PREPARED BY JAMES H. NEBELL AND ASSOCIATES, L.P. AND SHAWN G. GARDNER  
 ALL TOWNSHIP LINES, TOWN OF IRONDEQUOIT, MONROE COUNTY, NY  
 LAST REVISED SURVEY AND RECORDS OF JAMES H. NEBELL, L.P. AND SHAWN G. GARDNER



