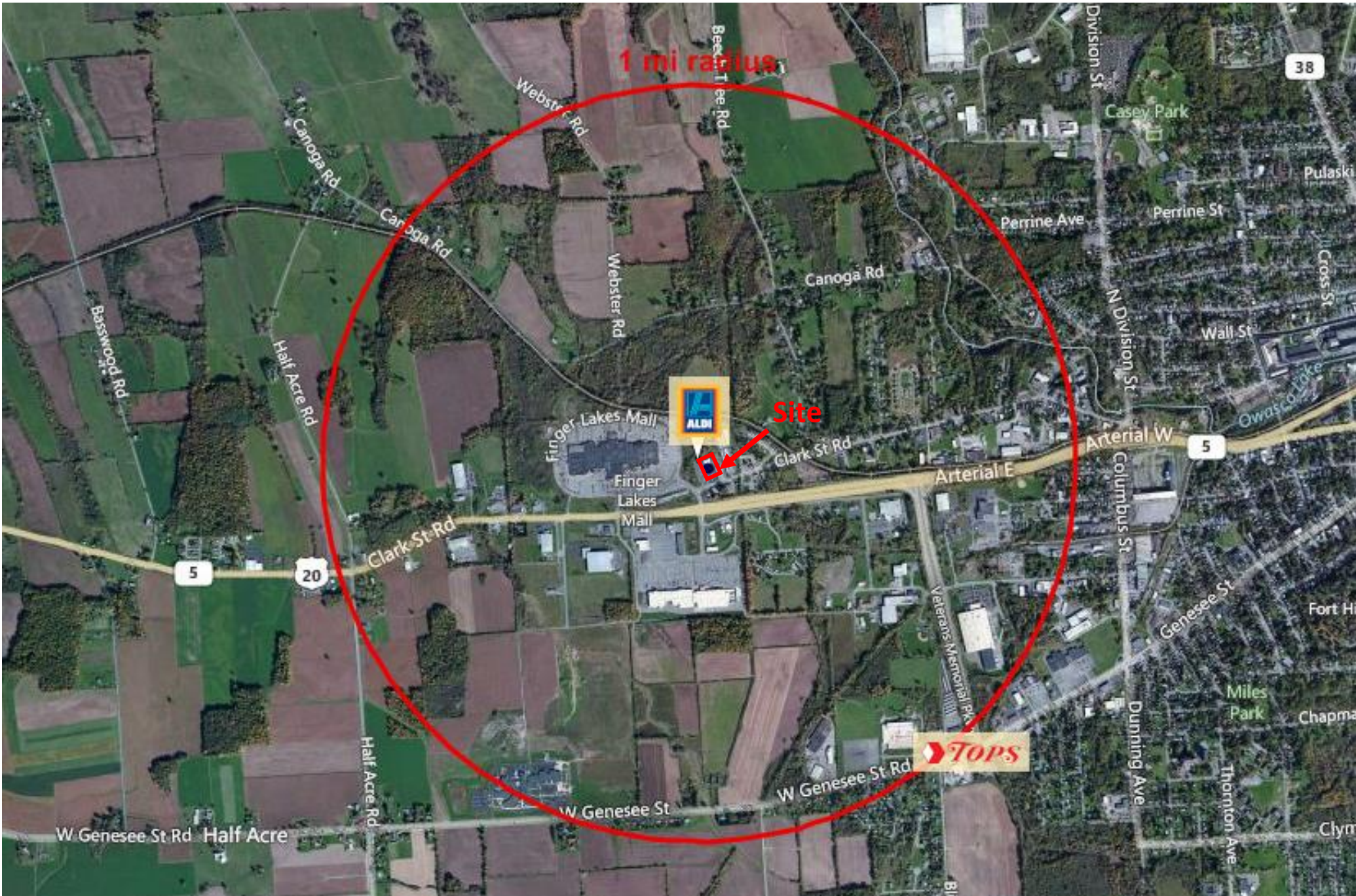


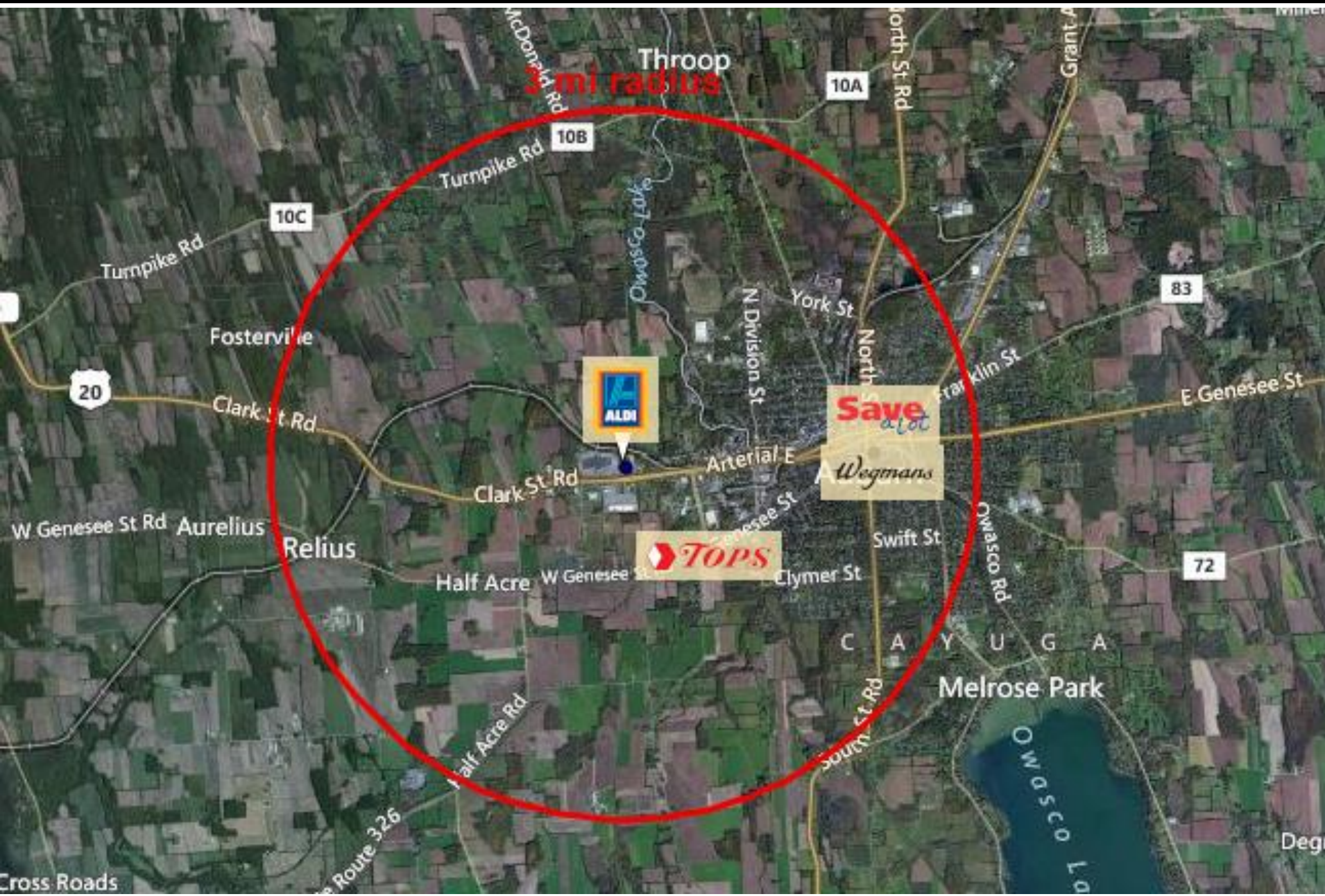
← Finger Lakes Mall

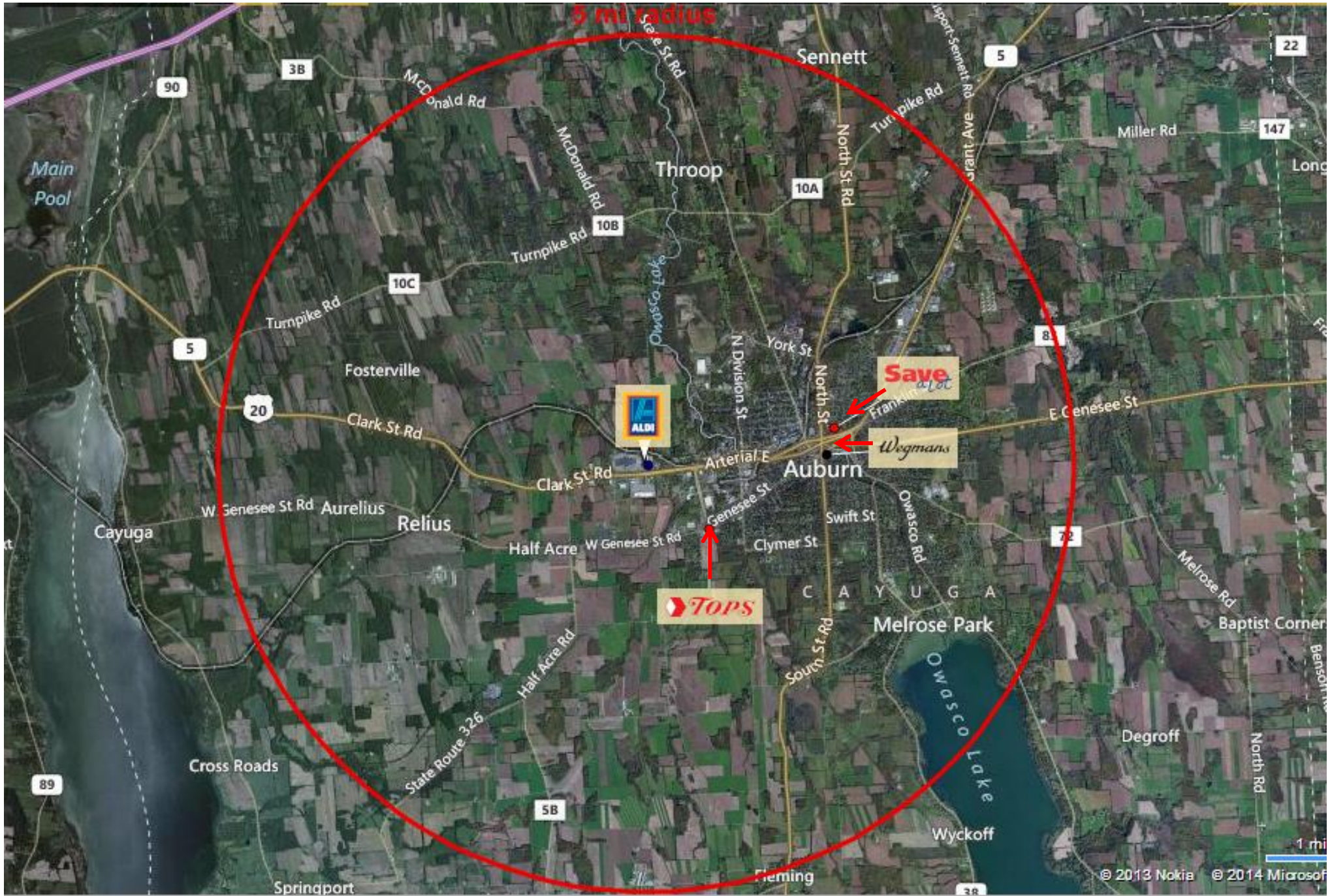


Site

Clark St







Auburn, NY 13022	1 ml radius		3 ml radius		5 ml radius	
Population						
Estimated Population (2013)	1,192		25,476		36,435	
Projected Population (2018)	1,216		25,948		37,127	
Census Population (2010)	1,190		25,448		36,390	
Census Population (2000)	1,196		26,172		37,150	
<i>Projected Annual Growth (2013 to 2018)</i>	24	0.4%	472	0.4%	692	0.4%
<i>Historical Annual Growth (2010 to 2013)</i>	2	0.1%	29	-	46	-
<i>Historical Annual Growth (2000 to 2010)</i>	-7	-0.1%	-724	-0.3%	-760	-0.2%
Households						
Estimated Households (2013)	522		10,682		15,290	
Projected Households (2018)	535		10,949		15,670	
Census Households (2010)	516		10,558		15,111	
Census Households (2000)	499		10,332		14,657	
<i>Projected Annual Growth (2013 to 2018)</i>	13	0.5%	266	0.5%	380	0.5%
<i>Historical Annual Growth (2010 to 2013)</i>	6	0.4%	124	0.4%	179	0.4%
<i>Historical Annual Growth (2000 to 2010)</i>	17	0.3%	226	0.2%	454	0.3%
Average Household Income						
Estimated Average Household Income (2013)	\$45,178		\$50,118		\$55,604	
Projected Average Household Income (2018)	\$49,686		\$54,370		\$59,960	
Census Average Household Income (2010)	\$44,127		\$46,285		\$51,801	
Census Average Household Income (2000)	\$36,841		\$37,221		\$42,861	
<i>Projected Annual Growth (2013 to 2018)</i>	\$4,508	2.0%	\$4,252	1.7%	\$4,355	1.6%
<i>Historical Annual Growth (2010 to 2013)</i>	\$1,051	0.8%	\$3,833	2.8%	\$3,803	2.4%
<i>Historical Annual Growth (2000 to 2010)</i>	\$7,286	2.0%	\$9,064	2.4%	\$8,940	2.1%
Median Household Income						
Estimated Median Household Income (2013)	\$39,035		\$40,395		\$45,805	
Projected Median Household Income (2018)	\$43,104		\$44,340		\$50,039	
Census Median Household Income (2010)	\$37,731		\$37,274		\$42,949	
Census Median Household Income (2000)	\$31,060		\$30,331		\$34,516	
<i>Projected Annual Growth (2013 to 2018)</i>	\$4,069	2.1%	\$3,945	2.0%	\$4,235	1.8%
<i>Historical Annual Growth (2010 to 2013)</i>	\$1,303	1.2%	\$3,121	2.8%	\$2,856	2.2%
<i>Historical Annual Growth (2000 to 2010)</i>	\$6,672	2.1%	\$6,943	2.3%	\$8,433	2.4%

